

## Stainless Steel-Mini-Latches

### SPECIFICATION

#### Types

- Type **DK**: Operation with triangular spindle (DK 6.5)
- Type **VK**: Operation with square spindle (VK 6)
- Type **SCH**: Operation with slot

Stainless Steel AISI 303

Latch AISI 304

Protection class IP65

via the housing gasket and the O-ring

### INFORMATION

Mini-Latches GN 115.6 have smaller dimensions than latches GN 115. They lock by a turning operation limited to 90° which moves the locking behind the door frame. The bevels of the locking ease the closing of the door.

Latches with different cranks cover a latch distance A from 7.5 to 19.5 mm.

In their standard design, the latches have the same lock / the same key.

Mini-Latches GN 115.6 are supplied with loosely enclosed latch.

### TECHNICAL INFORMATION

- List of latch types (see page 1456)
- IP Protection classes (see page A23)
- Stainless Steel characteristics (see page A26)

### ACCESSORY

- Socket keys GN 119.2 (see page 1530)
- Protective caps GN 120 (see page 1486)

### CONSTRUCTION AND ASSEMBLY INSTRUCTIONS

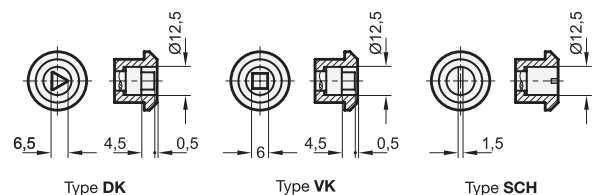
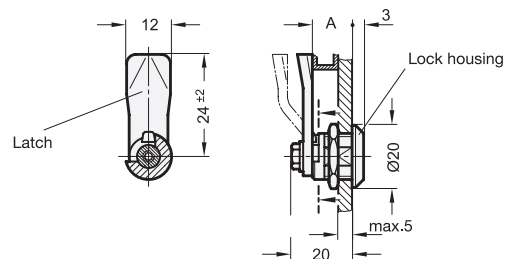
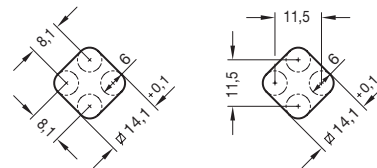
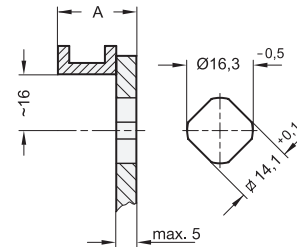
For installation, set a bore diameter in the door as shown in the outline drawing.

Once assembled, the latch is pushed through the bore diameter from the front. The hexagon nut can then be pushed over the latch from the back and bolted in place.

The **installation bore diameter** in the door leaf is usually generated by punching or laser machining in series production.

For small series and steel sheets below 2 mm thickness, the sheet metal punches GN 123 (see page 1493) are the tool of choice.

The installation bore diameter can also be set by drilling / milling as shown in the outline drawings.



### GN 115.6

### STAINLESS STEEL

Description	Latch distance A	⚖
GN 115.6-DK-7.5	7.5	15
GN 115.6-DK-13.5	13.5	20
GN 115.6-DK-19.5	19.5	25
GN 115.6-SCH-7.5	7.5	30
GN 115.6-SCH-13.5	13.5	30
GN 115.6-SCH-19.5	19.5	35
GN 115.6-VK-7.5	7.5	26
GN 115.6-VK-13.5	13.5	28
GN 115.6-VK-19.5	19.5	30

